



2012-2013 GMT Reports for District (or Undistricted) **District 2 A1**

GMT: **MICHAEL BUTLER**

Location: **TEXAS**

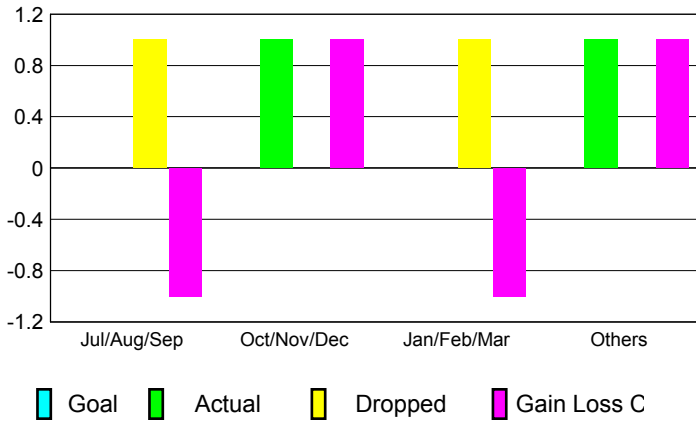
GMT CA: **1**

CLUBS

| Month | New Club Goal | Actual New Clubs | Actual Dropped Clubs | Gain/Loss of Clubs |
|------------------|---------------|------------------|----------------------|--------------------|
| 2012-2013 | | | | |
| Jul/Aug/Sep | 0 | 0 | 1 | -1 |
| Oct/Nov/Dec | 0 | 1 | 0 | 1 |
| Jan/Feb/Mar | 0 | 0 | 1 | -1 |
| Apr/May/June | 0 | 1 | 0 | 1 |
| Totals | 0 | 2 | 2 | 0 |

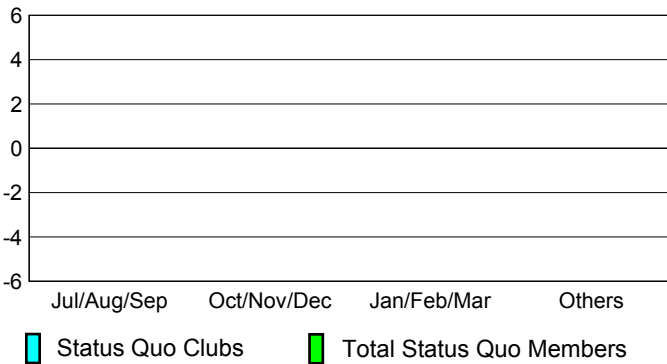
Club Results 2012-2013

Goal, New, Dropped, Gain/Loss

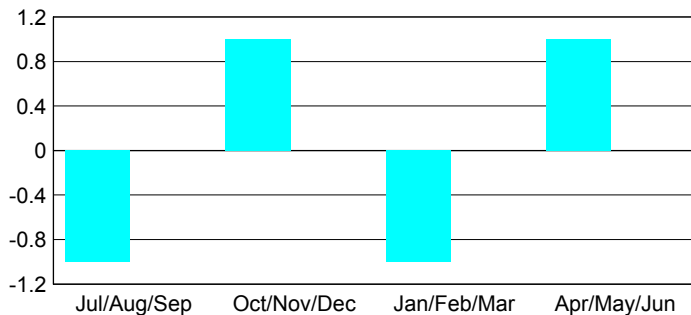


YTD Status Quo Clubs 2012-2013

Status Quo Clubs Compared to Status Quo Members



Club Gain/Loss 2012-2013

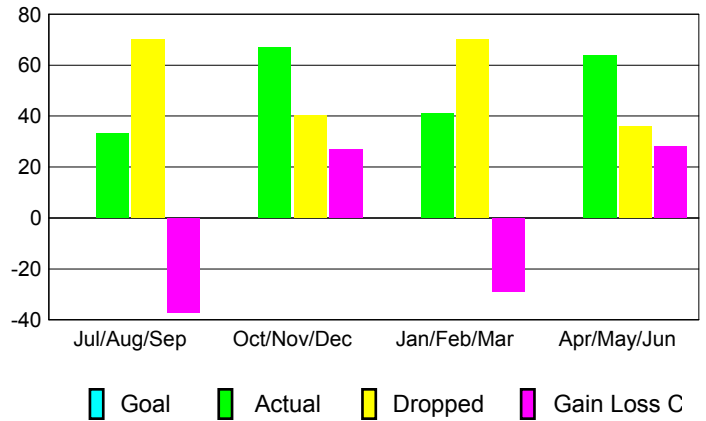


MEMBERSHIP

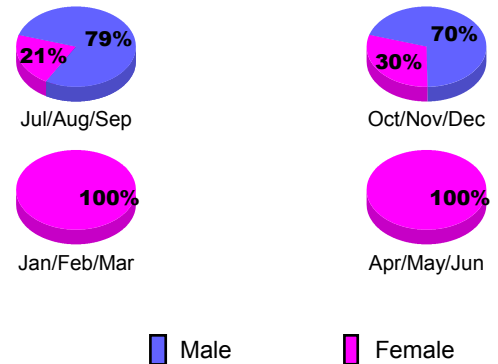
| Month | Net Memb Goal | Actual New Memb | Actual Dropped Memb | Gain/Loss of Memb |
|------------------|---------------|-----------------|---------------------|-------------------|
| 2012-2013 | | | | |
| Jul/Aug/Sep | 0 | 33 | 70 | -37 |
| Oct/Nov/Dec | 0 | 67 | 40 | 27 |
| Jan/Feb/Mar | 0 | 41 | 70 | -29 |
| Apr/May/June | 0 | 64 | 36 | 28 |
| Totals | 0 | 205 | 216 | -11 |

Membership Results 2012-2013

Goal, New, Dropped, Gain/Loss



Gender Comparison 2012-2013



Membership Gain/Loss 2012-2013

